



Near Newquay, Cornwall

Guide Price £235,000

🛏️ 2 🚿 2 🚗 1



- Detached Luxury Park Home Bungalow
- Pathfinder Silkwood Design(45'x20')
- Modern, Fitted Kitchen
- Gas Central Heating
- Gated Residential Park
- Two Double Bedrooms
- Spacious Lounge/Dining Room
- Double Glazing
- Gardens and Raised Decked Area
- Sought After Coastal Location

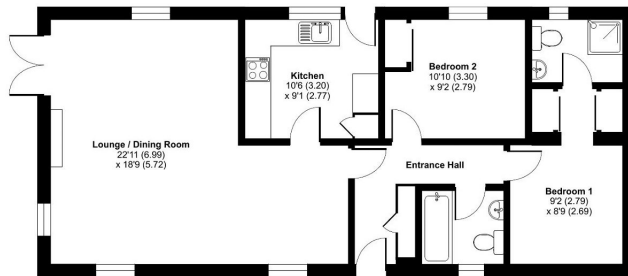


A stunning two double bedroom (45'x20) luxury park home bungalow located on a corner plot on this sought after gated residential park for the over 45's. Located close to the coast in Cornwall this home should be viewed to fully appreciate what it has to offer and boasts spacious, light and airy accommodation with a spacious Lounge/Dining room, a modern, fitted kitchen with integrated appliances, an ensuite shower and walk in wardrobe to the master bedroom and there is a further guest bathroom. Outside the home offers gardens to all sides, a 7'x5' storage shed, a decked patio area and a driveway with parking for two cars. Viewing is strongly recommended.



Beech Avenue, Fir Hill Park, Trebarber, Newquay, TR8

Approximate Area = 830 sq ft / 77.1 sq m
For identification only - Not to scale



GROUND FLOOR



Floor plan produced in accordance with RICS Property Measurement Standards incorporating International Property Measurement Standards (IPMS2 Residential). © iValuem 2024. Produced for The Park Home Agency Ltd. REF: 1146440



01793 230185

sales@theparkhomeagency.co.uk

Agents Notes: All measurements are approximate and quoted in metric with imperial equivalents and for general guidance only and whilst every attempt has been made to ensure accuracy, they must not be relied on. The fixtures, fittings and appliances referred to have not been tested and therefore no guarantee can be given that they are in working order. Internal photographs are reproduced for general information and it must not be inferred that any item shown is included with the property. For a free valuation, contact the numbers listed on the brochure